



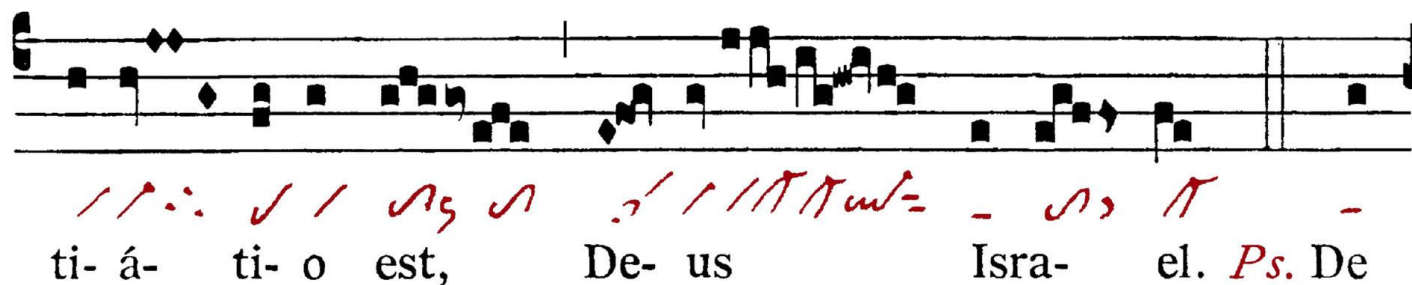
ANTIPHONA AD INTROITUM



I in-iqui-tá-tes observá-ve-ris Dó-mi-ne,



Dó-mi-ne quis sus-ti-né-bit? qui-a apud te pro-pi-



ti-á-ti-o est, De-us Isra-el. *Ps.* De



pro-fúndis clamávi ad te Dó-mi-ne: Dó-mi-ne exáudi



vo-cem me-am. Gló-ri-a Patri. E u o u a e,



GRADUALE

GR. I

E

C- ce quam bonum, et quam iu-cún-

dum ha-bi- tá- re fra- tres in u- num!

V. Sic-ut unguéntum

in cá-pi-te, quod de-scén- dit in

bar- bam, bar- bam Aa- ron.



Α Γ Δ Ε Ζ Η Θ Ι Κ Λ Μ Ν Ξ Ο Π Ρ Σ Τ Υ Φ Χ Ψ Ω Ω



Alleluia

I

A

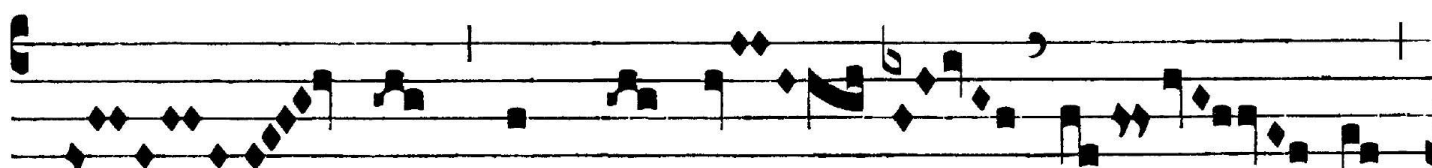
L-le- lú- ia.



V. Qui ti- ment Dó-



mi-num, spe- rent in e- o : ad-



iú- tor et pro- té- ctor



e- ó- rum est.



ANT. AD OFFERTORIUM

OF. VII

R

E- cordá- re me- i, DÓ- mi- ne, omni

pot-entá- tu- i dó- mi- nans : * da sermó-nem

re- ctum in os me- um, ut plá-ce- ant

ver- ba me- a in conspé-



ANT. AD COMMUNIONEM

CO. VIII

E

✓ ✓ / N M ✓ / ✓ - 0 ✓ ✓ /
- go clamá- vi, quó- ni- am exaudí- sti me

✓ π / ✓ S / - S: π S / π 0 π
De- us : * inclí- na aurem tu- am, et exáu- di

/ = N - S -
ver- ba me- a.